

**MONUMENT RECORD**  
**State of Indiana - County of Monroe**

**Section: 20**

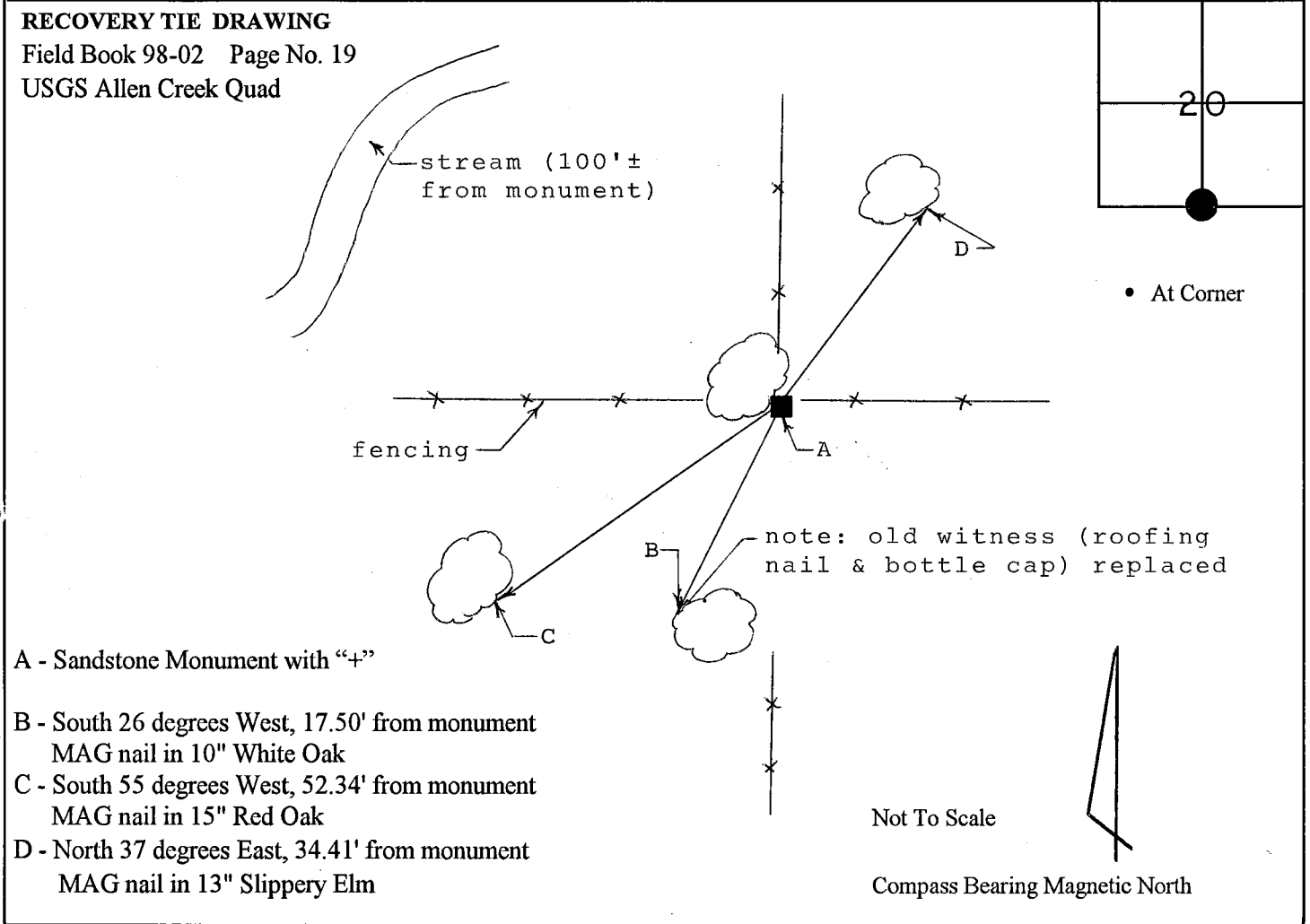
**Township: 8 North**

**Range: 1 East**

**Corner ID: Sa Cr G-17**

**Monument Description & Remarks:** Found Sandstone Monument with "+" etched in top, measuring 0.65' x 0.25', flush with ground and moss covered, at South ¼ corner of section. White Oak with lots of cross fencing and a lathe marked "¼ Sec. Cor." adjacent to monument; survey marker sign set 3' up on White Oak.

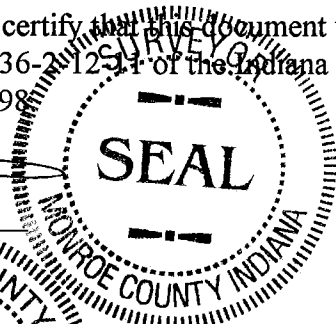
**References on file in the County Surveyor's Office:** Morgan - Monroe Forest survey prepared by Smith Quillman Associates, dated March 1, 1986.



- A - Sandstone Monument with "+"
- B - South 26 degrees West, 17.50' from monument  
MAG nail in 10" White Oak
- C - South 55 degrees West, 52.34' from monument  
MAG nail in 15" Red Oak
- D - North 37 degrees East, 34.41' from monument  
MAG nail in 13" Slippery Elm

I, Kevin P. Enright, Monroe County Surveyor, hereby certify that this document was prepared under my direction in accordance with the provisions of Section 36-2-12-1 of the Indiana Code; and the above data is given under my hand and seal this 23rd day of July, 1998.

*Kevin P. Enright*



Administered by Surveyor Review Board

